

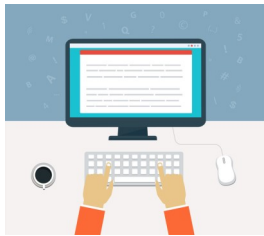
## SERVICE BRIEF

# Desktop Monitoring and Management

Manage desktop endpoints with ease.

**Monitor Desktops for Issues**

*Technology isn't cheap, so it's best that you resolve issues before they become major problems.*



Edit Technology Solutions offers a Desktop Monitoring and Maintenance solution that's designed to give you insights into how each of your individual workstations is

operating, as well as detect problems and inform you of what needs to be addressed. By taking a proactive stance against common hardware ailments, you can effectively prolong the life cycle of your organization's technology systems and maximize ROI.

The greatest benefit of our Desktop Monitoring and Maintenance solution is that you can detect issues that could evolve into much bigger problems. Unresolved issues can escalate into problems that can cause hardware failure and downtime, both of which can quickly drain your budget and leave you powerless. You can eliminate the majority of technology problems simply by catching them early and resolving them in a timely manner.

**Manage Resources Efficiently**

*Use what you have, not what you think you have,*

When your system's resources are being eaten up by unknown sources, chances are that there's something wrong with the workstation. Our Desktop Monitoring and Maintenance solution can examine the utilization of your system's CPU, disk space, and memory. If anything seems out of the ordinary, you can count on us to resolve the

issue promptly. In most cases, we can remotely access the computer to resolve the issue, allowing you to eliminate the costs of an on-site visit.

**Automatic Deployment of Patches and Security Updates**

*Never miss an update again.*

The more workstations you have, the more difficult it becomes to keep them all up to date with the latest patches and security updates. Edit Technology Solutions' Desktop Monitoring and Maintenance solution can deploy patches and updates as they're released, so that you'll never have to worry about resolving a critical vulnerability or software bug again. You can instead stay focused on keeping your operations moving forward as normal.

**Features**

- Insight into the function of your business' workstations
- Detect issues and problems before they affect your business
- Better Resource Management
- Automatic Patch and Security Deployment

**Benefits**

- Know about incoming threats and pending issues before they strike.
- Resolve these threats and issues proactively, minimizing potential downtime.
- Manage your computing resources to better identify and prepare for issues.
- Managed updates to keep your workstations up-to-date.
- Patch management to preserve your workstations' security.

**Get proactive and call us TODAY!**

(866)282-2810 | [www.etsinc.online](http://www.etsinc.online) | [info@etsinc.online](mailto:info@etsinc.online)

**Edit Technology Solutions, Inc.**  
3415 S. Sepulveda Blvd.  
Suite 1100  
Los Angeles, CA 90034